

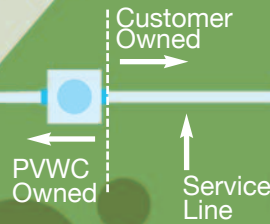
Lead pipes can put your family at risk



Passaic Valley
Water Commission



We'll help you replace the lead service line to your home



If you think your home has a lead service line, you need to take steps to avoid serious health problems for you and your family.

An important first step is to check and replace your service line. An estimated 15,000 homes in Paterson, Clifton, Passaic, Prospect Park, North Arlington, and Lodi still have lead service lines. *(The service line brings water from our pipe into your home.)*

PVWC offers a low-cost, zero-interest replacement program to assist with replacing customer-owned lead service lines. Contact us to find out how you may be able to take advantage of our Lead Service Line Replacement program.

If you have a lead service line, we may be able to help you replace it at little or no-cost to you. For more information, you can call us at 973-340-4300, email us at customerservice@pvwc.com or visit our website at www.pvwc.com

This report contains information about your drinking water. If you do not understand it, please have someone translate it for you.

Este informe contiene información muy importante sobre su agua potable. Tradúzcalo o hable con alguien que lo entienda bien.

આ અહેવાલ મારી પીવાની પાણી વિષે
જાણવા માટે અત્યંત મહત્વની માહિતી છે.
આનો અર્થ સમજાવવા કે અથવા તેને સમજાવવા
પર મને મદદ કરવાની કૃપા કરો

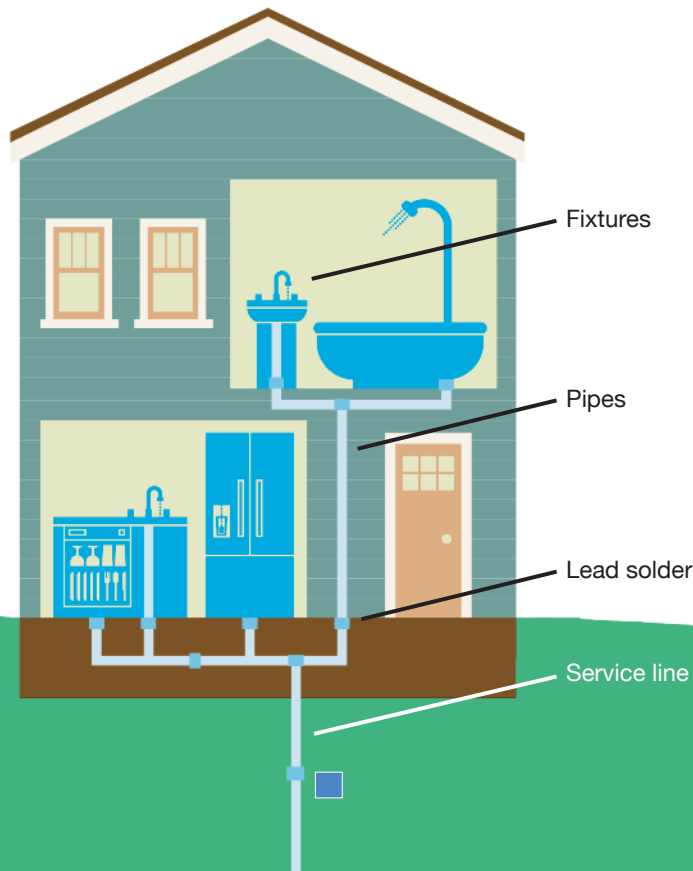
للمعلومات في هذا التقرير تحتوي على
معلومات مهمة عن مياه الشرب التي
تشربها. من فضلك اذا لم تفهم هذه
للمعلومات اطلب من يترجمها لك.



What to do if you think there's lead plumbing in your home

Lead can cause serious health problems if too much enters the body from drinking water or other sources.

When lead enters the body it can cause damage to the brain and kidneys, and interfere with the production of blood cells that carry oxygen to all parts of your body. The greatest risk of lead exposure is to infants, young children, and pregnant women.

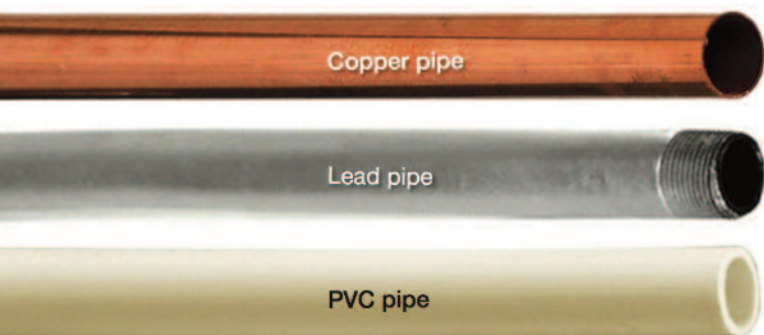


Homes built before 1986 are more likely to have plumbing containing lead. Lead may exist in your service line, internal plumbing, lead solder, faucets or fixtures.

Here's what to do if you think you have lead pipes in your home...

Test your water for elevated lead levels. Lead exposure can come from water that has been in contact with lead pipes or plumbing. If you think there may be lead in your drinking water, you should contact us and ask for a **free lead testing kit**. We'll test your water and let you know the results.

Check and replace your service line. An estimated 15,000 homes in Paterson, Clifton, Passaic, Prospect Park, North Arlington, and Lodi still have lead service lines. *(The service line brings water from our pipe into your home.)*



PVWC offers a low-cost, zero-interest replacement program to help replace lead service lines on your property. Contact us to find out how you may be able to take advantage of our **Lead Service Line Replacement program**.

Have your children tested. Consult your doctor or call your local Health Department for advice on testing children. A simple blood test can detect lead.

Check the plumbing in your home. Your local building/code department may be able to provide you with information about building permit records that may contain information on your home's plumbing materials. For more information, please call your municipal office.

Learn more about the risks of lead and how you can protect your family. For more information about lead, contact any of the following agencies:

- The National Lead Information Center 1-800-424-5323
- EPA's Safe Drinking Water Hotline 1-800-426-4791
- Consumer Product Safety Commission 1-800-638-2772
- Visit the EPA at www.epa.gov/lead/

For more information, call us at 973-340-4300, email us at customerservice@pvwc.com or visit our website at www.pvwc.com.

This notice is provided by Passaic Valley Water Commission • March 2019