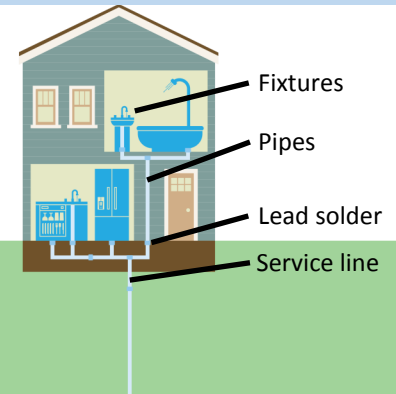




LEAD IN DRINKING WATER

Lead can cause serious health problems if too much enters the body from drinking water or other sources.



[CLICK HERE](#) for information on replacing your lead service line.

If you think you have lead plumbing in your home, do this...

Check and replace your service line. Thousands and thousands of homes in Clifton, Passaic and Paterson still have customer-owned lead service lines. PVWC offers a low-cost, zero-interest replacement program to help replace customer-owned lead service lines. To find out more, [CLICK HERE](#).

Test your water for elevated lead levels. We offer a free and simple way to find out if lead is present in your drinking water. [CLICK HERE](#) to learn how to get your free testing kit.

Check the plumbing in your home. Your local building/code department may be able to provide you with information about building permit records that may contain information about your home's plumbing materials. For more information, you can [CLICK HERE](#) to contact your local municipal office.

Have your children tested. Consult your doctor or call your local health department for advice on testing children. A simple blood test can detect lead.

Learn more about the risks of lead and how to protect your family. When lead enters the body it can cause damage to the brain and kidneys, and interfere with the production of red blood cells that carry oxygen to all parts of your body. The greatest risk of lead exposure is to infants, young children, and pregnant women. To learn more about the health risks of lead, [CLICK HERE](#).

Passaic Valley Water Commission
1525 Main Ave Clifton, NJ 07011
973-340-4300

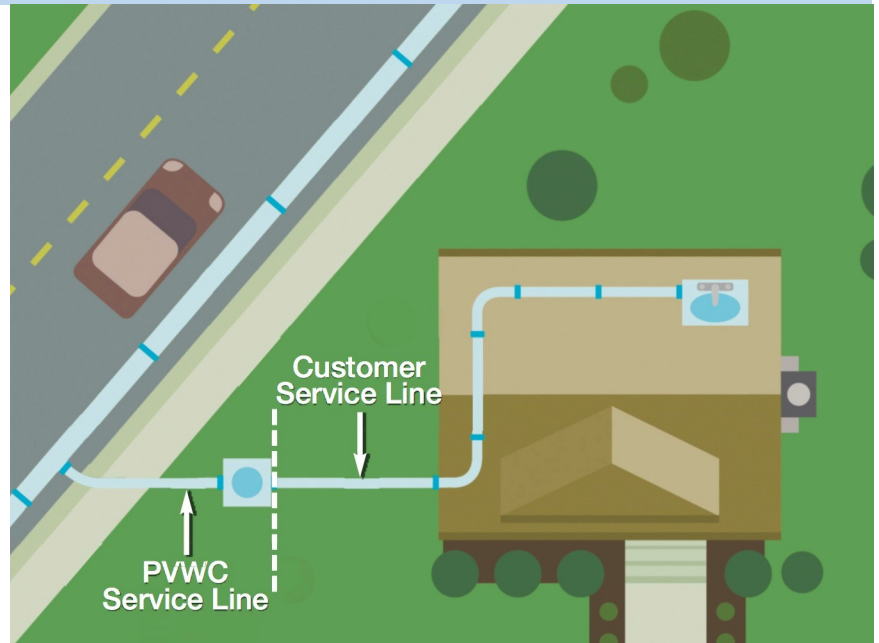
Office Hours: Monday to Friday 7:30 a.m. - 6 p.m.
24/7 Emergency Service is always available by calling 973-340-4300



LEAD SERVICE LINE

The “service line” brings water from our pipe into your home.

Thousands of homes in Paterson, Clifton and Passaic still have lead service lines.



If you think you may have a lead water service line on your property, you need to take immediate steps to replace it to protect you and your family. **PVWC offers a low-cost, zero-interest program** to help customers replace lead service lines on their property.



If you think you have a lead service line at your home, call our Customer Service Department at 973-340-4300 and tell them that you think you may have a lead service line and that you’d like to discuss your options for having PVWC assist you in replacing the lead service line.

Or email us at customerservice@pvwc.com and let us know that you’d like to speak with a customer service representative about replacing a customer-owned service line on your property.

Passaic Valley Water Commission
1525 Main Ave Clifton, NJ 07011
973-340-4300

Office Hours: Monday to Friday 7:30 a.m. - 6 p.m.
24/7 Emergency Service is always available by calling 973-340-4300



CHECK THE PLUMBING IN YOUR HOME

Not sure what type of plumbing is in your home?

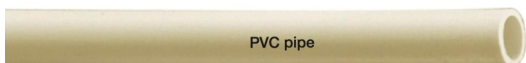
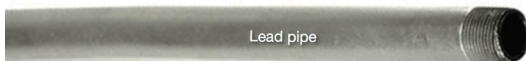
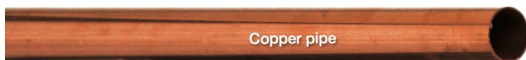
Here's one way to make sure your family is safe.



Homes built before 1986 are more likely to have plumbing containing lead or lead solder. New homes may also have lead. Even brass faucets, fittings, and valves, including those advertised as “lead-free” may contain some lead.

Your local building/code department may be able to provide you with information about building permit records that may contain information on your home's plumbing materials. Please call your local municipal office:

- Clifton Building Department: 973-470-5809
- Lodi Building Department: 973-859-7410
- North Arlington Construction Department: 201-991-6060 ext. 111
- Passaic Department of Housing: 973-365-5615
- Paterson Division of Community Improvements: 973-321-1232
- Prospect Park Building Department: 973-970-7902 ext. 524



**Passaic Valley Water Commission
1525 Main Ave Clifton, NJ 07011
973-340-4300**

**Office Hours: Monday to Friday 7:30 a.m. - 6 p.m.
24/7 Emergency Service is always available by calling 973-340-4300**



FREE LEAD TESTING KIT

Worried there may be lead in your drinking water?

Contact us and ask for a free lead testing kit. We'll test your water and let you know the results.



Lead is a common metal found in the environment. Drinking water is just one possible source of lead exposure. The main sources of lead exposure are lead-based paint and lead-contaminated dust or soil, and some plumbing materials. In addition, lead can be found in certain types of pottery, pewter, brass plumbing fixtures, food, and cosmetics. Other sources include exposure in the work place and exposure from certain hobbies (lead can be carried on clothing or shoes). Lead is found in some toys, playground equipment, and children's metal jewelry.

Lead is not present in the water supplied to you.



When water has been in contact with pipes or plumbing that contains lead for several hours, the lead may enter the drinking water. This means the first water drawn from the tap in the morning, or later in the afternoon after returning from work or school, can contain fairly high levels of lead.

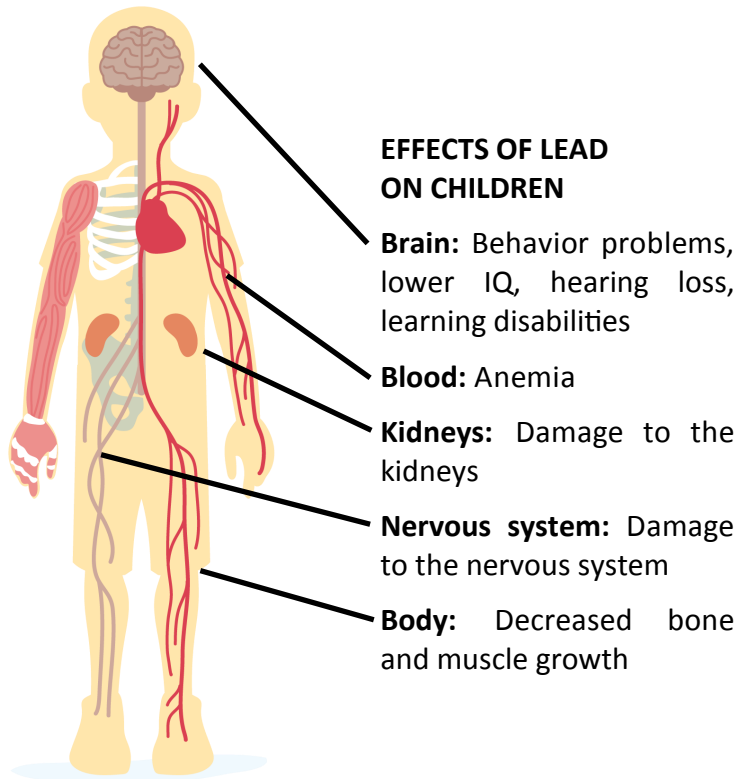
If you think there may be lead in your drinking water, call the Customer Service Department at 973-340-4300 and ask for a free lead testing kit.

**Passaic Valley Water Commission
1525 Main Ave Clifton, NJ 07011
973-340-4300**

**Office Hours: Monday to Friday 7:30 a.m. - 6 p.m.
24/7 Emergency Service is always available by calling 973-340-4300**



LEARN ABOUT THE RISKS OF LEAD



Lead exposure can come from lead-based paints, soil, dust, or water that comes in contact with lead pipes or plumbing.

There is no safe level of lead for children or adults. Symptoms of lead exposure may not appear, but damage can still occur. Lead poisoning can cause a coma, seizure or death, although that is rare.

The U.S. Environmental Protection Agency (EPA) estimates that 10 to 20 percent of a person's potential exposure to lead may come from drinking water. Infants who consume mostly formula mixed with lead-containing water can receive 40 to 60 percent of their exposure to lead from drinking water.

Don't forget about other sources of lead such as lead paint, lead dust, and lead in soil. Wash your children's hands and toys often as they can come into contact with dirt and dust containing lead.

To learn more about the risks of lead, contact these agencies:

- The National Lead Information Center 1-800-424-5323
- EPA's Safe Drinking Water Hotline 1-800-426-4791
- Consumer Product Safety Commission 1-800-638-2772
- Visit the EPA at www.epa.gov/lead/

Passaic Valley Water Commission
1525 Main Ave Clifton, NJ 07011
973-340-4300

Office Hours: Monday to Friday 7:30 a.m. - 6 p.m.
24/7 Emergency Service is always available by calling 973-340-4300