

SECTION 6.0 HISTORIC ARCHITECTURAL SURVEY RESULTS

6.1 Field Reconnaissance

The APE-Architecture is located in a densely developed urban area of the City of Paterson. It includes the Levine Reservoir, former Grand Street Pumping Station, and several twentieth-century residences and businesses on Grand Street and Reservoir Road. A portion of the APE-Architecture, including the Levine Reservoir, lies within the Great Falls/SUM Historic District (see Figure 6.1). A contributing resource, the Upper Raceway, is located east of the reservoir in the Upper Raceway Park and within the APE-Architecture. A second contributing resource, the Casper Silk Company industrial complex, is located on McBride Avenue northwest of the reservoir, just outside the APE-Architecture. The topography of the area and the substantial vegetative buffer around the north end of the reservoir effectively screens the Casper Silk Company complex from view of the reservoir (Figures 6.1-6.2; Plate 6.1).

The Levine Reservoir is an approximately four-acre body of water created by excavation down to bedrock and construction of stone and earth walls that were later reinforced with concrete (Figure 6.3; Plate 6.1). The south end of the reservoir has a stone-faced retaining wall along Grand Street (Plate 6.2). The outlet chamber on the south wall is covered with a stuccoed masonry structure with shed roof (Plate 6.3). A brick pumping station, circa 1970, and a small storage building, are located in the southwest corner of the property, near the site entrance at Grand and New Streets.

On the opposite side of Grand Street, the former Grand Street Pumping Station is located east of the New Street intersection (Plate 6.4). The brick building has a chamfered corner entry bay, brick pilasters, corbelled cornice, and large square chimney tower at its east end. Window openings at the building's east end are segmentally arched and contain 9/9 double-hung sash; oculus windows are located in the western bays of the north elevation. The original arched doorway has been filled with brick. West of New Street lies the site of the Passaic Water Company's regulator house, no longer extant. A historical marker indicates the location of the Morris Canal bed, which extended along the south side of the pumping station.

West of the Levine Reservoir lies a primarily residential neighborhood developed during the period 1915-1940. A two-story stuccoed commercial building occupied by a bakery is on Grand Street adjacent to the reservoir property (Plates 6.5-6.6).

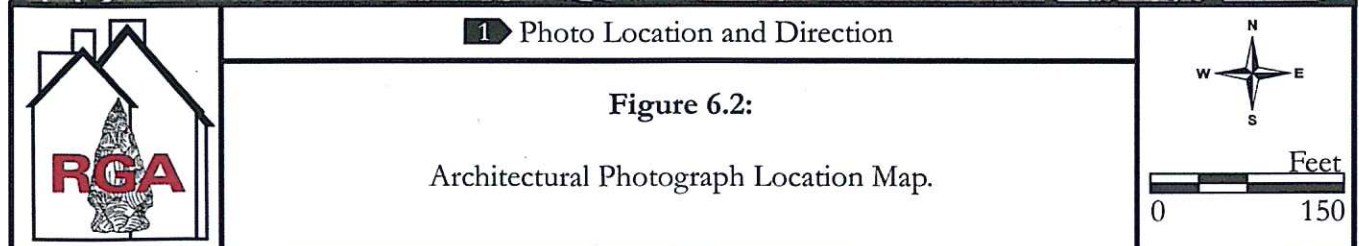




Plate 6.1:

Levine Reservoir from the embankment at Grand Street. Note the original bedrock walls on the east side (at right) and newer concrete walls on the west. The Casper Silk Mill is located downhill from the trees at left center in the photo, which completely screen the historic industrial complex from view.

Photo view: North

Photographer: Jennifer B. Leynes

Date: May 20, 2010



Plate 6.2:

South retaining wall of Levine Reservoir. The circa 1970 brick pumping station is visible behind the fence at left.

Photo view: Northeast

Photographer: Jennifer B. Leynes

Date: May 20, 2010

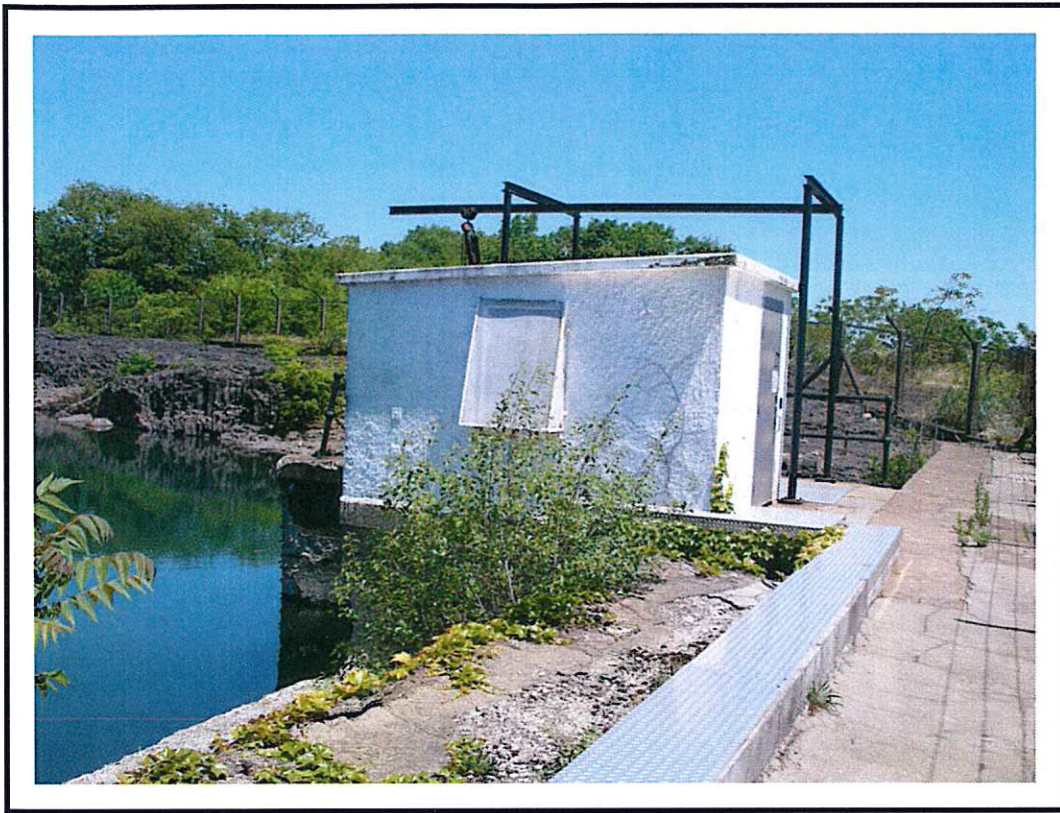


Plate 6.3:

Structure at outlet chamber on south wall.

Photo view: East

Photographer: Jennifer B. Leynes

Date: May 20, 2010

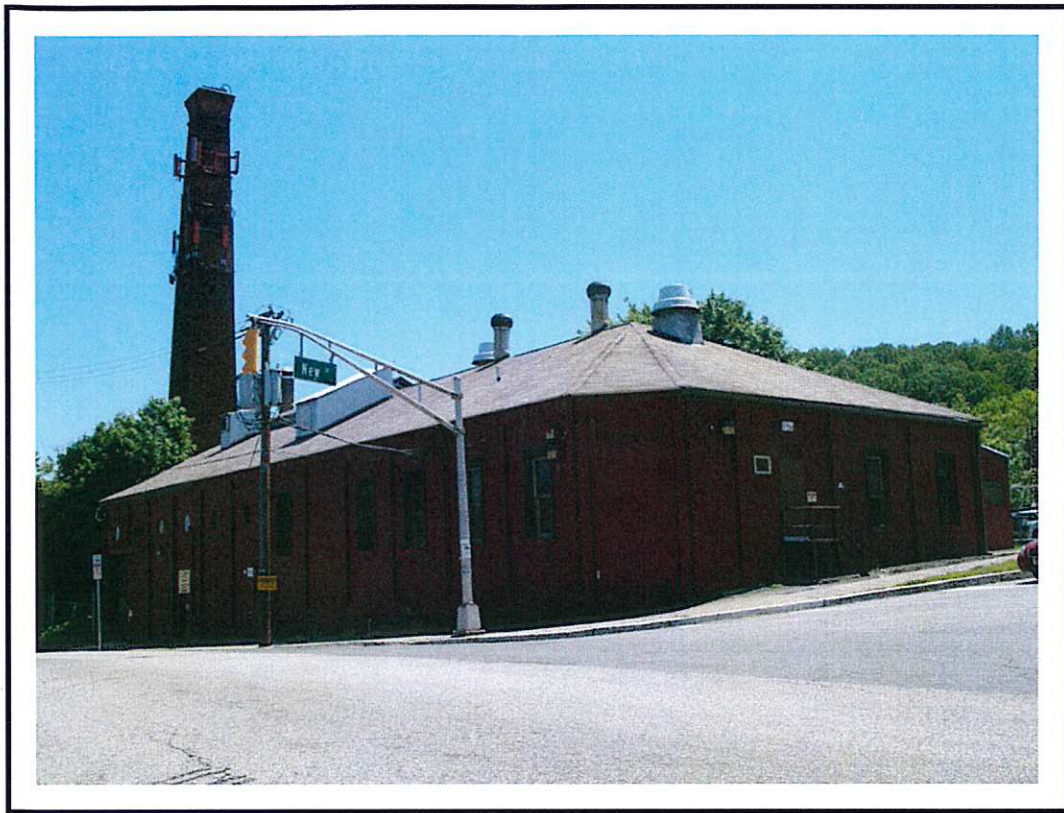


Plate 6.4:

Grand Street Pumping Station.
Photo view: Southeast
Photographer: Jennifer B. Leynes
Date: May 20, 2010



Plate 6.5:

Minardi's Bakery, 125 Grand Street.
Photo view: North
Photographer: Jennifer B. Leynes
Date: May 20, 2010



Plate 6.6:

View of residential neighborhood west of reservoir from Reservoir Road. Note that the reservoir is at a high point, and the surrounding topography slopes downward toward the Passaic River (not visible).

Photo view: Northwest

Photographer: Jennifer B. Leynes

Date: May 20, 2010

6.2 Identification of Historic Properties

As a result of the architectural survey, it was determined that the Levine Reservoir property lies within the Great Falls of Paterson/SUM Historic District, which is listed on the State and National Registers and is a National Historic Landmark property. The National Register status of the reservoir is not indicated in the addendum that expanded the boundaries to include this area; however, the Levine Reservoir was built in 1885, within the district's period of significance (1793-1912), and is historically associated with the industrial development of Paterson. The reservoir has not been significantly altered since its construction and therefore retains a high level of integrity. As a result, it is the opinion of RGA that the Levine Reservoir is a contributing resource within the Great Falls/SUM Historic District.

The Grand Street Pumping Station was previously recommended as eligible for the National Register in the citywide historic sites survey of 1987 (Paterson Department of Community Development 1987:1608-166). An intensive-level survey and evaluation of this building may be required by the HPO because it was previously identified as an eligible property and because of its historical associations with the Levine Reservoir.

Properties west of the New Street/Reservoir Street intersection do not appear to meet the National Register Criteria for significance or integrity. The Casper Silk Company complex, which is a contributing resource to the Great Falls/SUM Historic District, is effectively screened from the reservoir property by existing vegetation and will not be impacted by the project.

6.3 Assessment of Effects

The proposed water storage improvement project will have an effect on the Great Falls/SUM National Historic Landmark district because of construction impacts on a contributing resource, the Levine Reservoir, and visual impacts to the district. As a result, consultation with HPO regarding the design of the storage tank to be constructed within the reservoir is recommended. Enhancement of the existing vegetative buffer on the north end of the reservoir should be considered during consultation as a means of reducing the visual effect of the project on the district. Historic and photographic documentation of the reservoir to Historic American Engineering Record (HAER) standards may also be required. An Application for Project Authorization under the New Jersey Register of Historic Places Act will be required for the project because it lies within a State Register-listed historic district and will utilize public funding.

Consultation with the HPO is recommended to determine whether an intensive-level survey of the former Grand Street Pumping Station at 138 Grand Street is required. If the pumping station is determined to be eligible for the National Register, then the effects of the project on the building will be assessed.

SECTION 7.0 CONCLUSIONS AND RECOMMENDATIONS

Richard Grubb & Associates performed a Phase IA cultural resources survey for the Levine Reservoir in the City of Paterson, Passaic County, New Jersey as part of the feasibility study for the PVWC water storage improvement project. Based on the topographic setting, the results of background research, and a site visit, the APE-Archaeology is considered to have very low potential to contain significant prehistoric and historic period archaeological resources. No further archaeological survey is recommended.

The historic architectural survey identified one property listed on the State and National Registers in the APE-Architecture, the Great Falls of Paterson/Society for Useful Manufactures Historic District. The district has also been designated a National Historic Landmark. It is the opinion of RGA that the Levine Reservoir is a contributing resource to the historic district. The project will have an effect on the historic district; therefore, consultation with the HPO is recommended to avoid an adverse effect through context-sensitive design and enhancement of the vegetative buffer around the reservoir's north end. Documentation of the reservoir to Historic American Engineering Record standards may also be required by the HPO. Additionally, an Application for Project Authorization under the New Jersey Register of Historic Places Act is required because the project will utilize public funding for construction in a State Register-listed district.

Consultation with the HPO regarding the need for intensive-level survey of the Grand Street Pumping Station is also recommended. The pumping station was previously recommended eligible for the National Register and has historical associations to the Levine Reservoir. If the pumping station is determined eligible for the National Register, then the effects of the project on the building will be assessed.

SECTION 8.0 REFERENCES

Archaeological & Historical Consultants, Inc.

- 2004 Section 106 Collocation project, Section 106 Field Assessment. On file, State Historic Preservation Office, Trenton, New Jersey.

Archaeological Research Consultants, Inc.

- 1977 Phase II Historical Research Survey of the Proposed Sanitary Sewer Replacement System, City of Paterson, Passaic County, New Jersey. On file, State Historic Preservation Office, Trenton, New Jersey.

Brown, John J.

- 1890 "Paterson's Water Supply," in *Paterson, New Jersey: Its Advantages for Manufacturing and Residence*. Charles A. Shriner, ed. Paterson Board of Trade, Paterson, New Jersey. Electronic document, <http://www.googlebooks.com>, accessed 9 June 2010.

Cavallo, John and R. Alan Mounier

- 1982 Aboriginal Settlement Patterns in the New Jersey Pinelands. In *History, Culture, and Archaeology of the Pine Barrens: Essays from the Third Annual Conference*, edited by John W. Sinton, pp. 68-100. Center for Environmental Research, Stockton State College, Pomona, New Jersey.

Chesler, Olga (Editor)

- 1982 *New Jersey's Archaeological Resources: A Review of Research Problems and Survey Priorities, The Paleo-Indian Period to the Present*. Historic Preservation Office, New Jersey Department of Environmental Protection, Trenton, New Jersey.

Collins, Beryl, and Karl Anderson

- 1994 *Plant Communities of New Jersey: A Study in Landscape Diversity*. Rutgers University Press, New Brunswick, New Jersey.

Cross, Dorothy

- 1941 *Archaeology of New Jersey, Volume One*. The Archaeological Society of New Jersey and the New Jersey State Museum, Trenton, New Jersey.

Custer, Jay F.

- 1996 *Prehistoric Cultures of Eastern Pennsylvania*. Anthropological Series No. 7, Pennsylvania Historical and Museum Commission, Harrisburg, Pennsylvania.

Department of Community Development

- n.d. a Block 859 Ward Street – Main Street – Market Street – Cianci Street. On file, State Historic Preservation Office, Trenton, New Jersey.

- n.d. b Archaeological testing and Construction, Rogers Locomotive and Machine Works Company Erecting Shop (report missing). On file, State Historic Preservation Office, Trenton, New Jersey.

Drake, Jr., Avery, Richard Volkert, Donald Monteverde, Gregory Herman, Hugh Houghton, Ronald Parker, and Richard Dalton

- 1996 Bedrock Geologic Map of Northern New Jersey. U.S. Geological Survey, U.S. Department of the Interior, Washington, D.C.

E.B. Hyde & Co.

- 1877 Atlas of Passaic County, N.J., E.B. Hyde & Co., New York, New York.

Grossman-Bailey, Ilene

- 2001 *"The People Who Lived By The Ocean": Native American Resource Use and Settlement in the Outer Coastal Plain of New Jersey*. Ph.D. Dissertation, Department of Anthropology, Temple University, Philadelphia, Pennsylvania.

Hasenstab, Robert

- 1991 Wetlands as a Critical Variable in Predictive Modeling of Prehistoric Site Locations: A Case Study from the Passaic River Basin, in *Man in the Northeast* 42:39-61.

Hills, Leut. I.

- 1781 Sketch of the Northern Parts of New Jersey. On file, Library of Congress digital map collections. Electronic document, <http://memory.loc.gov/ammem/index.html>, accessed June 14, 2010.

Historic Conservation and Interpretation, Inc.

- 1979 Cultural Resource Survey Garret Mountain Park, Passaic County, N.J. On file, State Historic Preservation Office, Trenton, New Jersey.

Hopkins, G.M.

- 1861 Map of the Counties of Bergen and Passaic, New Jersey. G.H. Corey, Philadelphia, Pennsylvania.

Hunter Research, Inc.

- 1999 Phase IA Archaeological Survey, proposed Parking Deck Structure, Market Street, City of Paterson, Passaic County, New Jersey. On file, State Historic Preservation Office, Trenton, New Jersey.

John Milner Associates

- 1992 With Hope and Labor: Everyday Life in Paterson's Dublin Neighborhood. Volume I: Data Recovery on Blocks 863 and 866 within the Route 19 Connector Corridor in Paterson, New Jersey. On file, State Historic Preservation Office, Trenton, New Jersey.

Kraft, Herbert C.

- 1976 Archaeological and Historical Survey of the Proposed Sanitary Sewer Replacement System, city of Paterson, Passaic County, New Jersey. On file, State Historic Preservation Office, Trenton, New Jersey.

- 1986 *The Lenape: Archaeology, History, and Ethnography*. New Jersey Historical Society, Newark, New Jersey.

- 2001 *The Lenape-Delaware Indian Heritage: 10,000 B.C. to A.D. 2000*. Lenape Books, Union, New Jersey.

Louis Berger & Associates, Inc.

- 1996 Paterson Archaeological Resources Sensitivity Assessment. On file, State Historic Preservation Office, Trenton, New Jersey.

- 2003 Monitoring of the Debris Removal at the Colt Gun Mill, Paterson, New Jersey. On file, State Historic Preservation Office, Trenton, New Jersey.

Mounier, R. Alan

- 1998 Small Things, Considered Closely. *Bulletin of the Archaeological Society of New Jersey* 53: 33-39.

- 2003 *Looking Beneath the Surface: The Story of Archaeology in New Jersey*. Rutgers University Press, New Brunswick, New Jersey.

Nationwide Environmental Title Research (NETR)

1966 Historic Aerial Photographs. Electronic Document, historicaerials.com, accessed 10 June 2010.

1979 Historic Aerial Photographs. Electronic Document, historicaerials.com, accessed 10 June 2010.

New Jersey Community Development Corporation

1997 Site Plan and Photographs Former Rogers Locomotive Company Administration Building and Frame Fitting Shop. On file, State Historic Preservation Office, Trenton, New Jersey.

New Jersey Department of Transportation

1982 Cultural Resource Study, Route 20 Connector from Route I-80 to Paterson Central Business District. On file, State Historic Preservation Office, Trenton, New Jersey.

New Jersey School of Architecture.

2006 Colt Gun Mill Adaptive Reuse Study, Paterson, New Jersey. On file, State Historic Preservation Office, Trenton, New Jersey.

Pagoulatos, Peter

1998 Prehistoric Settlement Patterns of New Jersey: Paleo-Indian to Late Woodland Periods. Occasional Publications in Archaeology No. 1, Center for Archaeological Studies, Brookdale Community College, Lincroft, New Jersey.

Pagoulatos, Peter and Gregory Walwer

1991 Native American Land-Use Patterns of the Outer Coastal Plain of New Jersey. *Man in the Northeast* 41: 85-104.

Passaic Consolidated Water Company

1924 "Pipes and Gates at 'Stony Road' Pumping Station." Revised 1926. On file, Passaic Valley Water Commission, Clifton, New Jersey.

Passaic Valley Water Commission (PVWC)

1932a "Stony Road Reservoir Improvements[sic] General Plan." On file, Passaic Valley Water Commission, Clifton, New Jersey.

Passaic Water Company

1912 "Plan Showing Property of the Passaic Water Company at Stony Road Reservoir in the City of Paterson, N.J., Conveyed to the S.U.M." On file, Passaic Valley Water Commission, Clifton, New Jersey.

1932b "Stony Road Reservoir Improvements Grand Street Outlet Chamber and Typical Wall Construction." On file, Passaic Valley Water Commission, Clifton, New Jersey.

2010 "History." Electronic document, <http://www.pvwc.com/about/history.htm>, accessed 18 May 2010.

Paterson Department of Community Development

1987 Cultural Resource Survey, City of Paterson. Vol. 2. On file, State Historic Preservation Office, Trenton, New Jersey.

Preservation Resource Group, Inc.

1980 Paterson Hydroelectric Power Plant Historic Analysis and Preservation guidelines. On file, State Historic Preservation Office, Trenton, New Jersey.

Ranere, Anthony J. and Patricia Hansell

1985 Archaeological Survey in the Drainage of the Lower Great Egg Harbor River. Manuscript on file at the State Historic Preservation Office, Trenton, New Jersey.

1987 A Comprehensive Work Plan for the Development of a Predictive Model of Prehistoric Site Occurrences within the Pinelands Area. Unpublished Manuscript on file at the New Jersey Pinelands Commission, New Lisbon, New Jersey.

Richard Grubb & Associates, Inc.

1997 Stage IA Cultural Resources Survey Combined Sewer Overflow Planning Study, City of Paterson, Passaic County, New Jersey. On file, State Historic Preservation Office, Trenton, New Jersey.

1998 Stage IB Cultural Resources Investigation Combined Sewer Overflow (Solids/Floatables Control) Planning Study, City of Paterson, Passaic County, New Jersey. On file, State Historic Preservation Office, Trenton, New Jersey.

2000 Stage II Cultural Resources Investigation CSO Solids/Floatables Control Planning Study, Combined Sewer Overflow Site CSO 016, City of Paterson, Passaic County, New Jersey. On file, State Historic Preservation Office, Trenton, New Jersey.

2002 Section 106 Consultation Sprint Spectrum Downtown Paterson Site 124-126 Market Street, City of Paterson, Passaic County, New Jersey. On file, State Historic Preservation Office, Trenton, New Jersey.

2005 Stage II Cultural Resources Investigation CSO Solids/Floatables Control Planning Study, Combined Sewer Overflows 003 and 005, City of Paterson, Passaic County, New Jersey. On file, State Historic Preservation Office, Trenton, New Jersey.

2006 Stage IB Cultural Resources Survey CSO 024, CSO Solids/Floatables Control Facilities, City of Paterson, Passaic County, New Jersey. On file, State Historic Preservation Office, Trenton, New Jersey.

2008 Supplemental Stage II Cultural Resources Investigation, Site 28-Pa-176, Combined Sewer Overflow 005, City of Paterson, Passaic County, New Jersey. On file, State Historic Preservation Office, Trenton, New Jersey.

Ritchie, William A.

1980 *The Archaeology of New York State* (rev. ed.). Harbor Hill Books, Harrison, New York.

Robinson, E. and R. H. Pidgeon

1884 *Atlas of the City of Paterson*. E. Robinson, New York, New York.

Rutsch, Edward S.

1998 Historical Survey of 14 Van Houten Street, Paterson, NJ. On file, State Historic Preservation Office, Trenton, New Jersey.

Sanborn Map Company

1915 *Insurance Maps of Paterson, New Jersey*. Vol. 3. Sanborn Map Company, New York, New York.

Sargent, Felicity H.

1978 Archaeological/Architectural Survey of the Paterson Demonstration Bikeway. On file, State Historic Preservation Office, Trenton, New Jersey.

Seglin, Lester L.

1975 Soil Survey of Passaic County. United States Department of Agriculture.

Skinner, Alanson and Max Schrabisch

1913 A Preliminary Report of the Archaeological Survey of the State of New Jersey. In *Geological Survey of New Jersey, Bulletin 9*. MacCrellich & Quigley, Trenton, New Jersey.

Snyder, John P.

1969 *The Story of New Jersey's Civil Boundaries, 1606-1968*. Bureau of Geology and Topography, Bulletin 67. Trenton, New Jersey.

Stone, Byron D., Scott D. Stanford, and Ron W. Witte

2002 *Surficial Geologic Map of Northern New Jersey*. U.S. Department of the Interior, U.S. Geological Survey, Washington, D.C.

United States Geological Survey [U.S.G.S.]

1887 15' Quadrangle: Paterson, NJ.

1944 7.5' Quadrangle: Paterson, NJ.

1955 7.5' Quadrangle: Paterson, NJ.

1955 (1970) 7.5' Quadrangle: Paterson, NJ.

1955 (1981) 7.5' Quadrangle: Paterson, NJ.

1995 7.5' Quadrangle: Paterson, NJ.

U.R.S./Madigan-Praeger, Inc. & John Milner Associates

1980 Historical, Architectural, and Archeological Resources. Route 20 Connector Engineering and Environmental Studies – Peterson, N. J. On file, State Historic Preservation Office, Trenton, New Jersey.

Walwer, Gregory and Peter Pagoulatos

1990 Native American Land-Use Patterns of the Outer Coastal Plain of New Jersey, in *Bulletin of the Archaeological Society of New Jersey* 45:77-95.

Warfel, Stephen G.

1977a An Archaeological Management Proposal for the Upper Raceway Tailrace Investigation. On file, State Historic Preservation Office, Trenton, New Jersey.

1977b A Report on the Upper Raceway Cleanup Project E.D.A. Title X – Project #01-21-0013 On file, State Historic Preservation Office, Trenton, New Jersey.

1977c A Cultural Resource Management Program for the Great Falls Upper Raceway Park. On file, State Historic Preservation Office, Trenton, New Jersey.

Wolfe, Peter E.

1977 *The Geology and Landscapes of New Jersey*. Crane, Russak & Company, New York, New York.

SECTION 9.0 APPENDICES

APPENDIX A: RECORD OF PUBLIC CONSULTATION

Agencies and individuals with an identified interest in archaeology, history or historic preservation were contacted as part of this Phase IA cultural resources survey regarding the water storage improvement project feasibility study for three reservoirs: Great Notch, New Street, and Levine. Information was requested regarding opinions as to the significance of properties within the APE, project compatibility/incompatibility with existing historic resources, project effect(s) on eligible resources, and other thoughts and concerns relevant to the review process for the project. As a result, the following persons and/or organizations were contacted requesting information on and possible impacts to historic resources:

Consulting and Interested Parties:

Mr. Gianfranco Archimede
Paterson Historic Preservation Commission
72 McBride Avenue Extension
Paterson, NJ 07501-2660

Contact: letter sent: May 26, 2010, attached
Contacted by telephone June 17, 2010, see attached Telephone Log

Ms. Alison Faubert
Passaic County Historical Society
Lambert Castle
3 Valley Road
Paterson, NJ 07503-2932

Contact: letter sent: May 26, 2010, attached
Response: none to date

Mr. Ed Smyk
c/o Lambert Castle
3 Valley Road
Paterson, NJ 07503-2932

Contact: letter sent: May 26, 2010, attached
Response: see attached

Mr. Raymond Wright
Passaic County Parks Department
675 Goffle Road
Hawthorne, NJ 07506

Contact: letter sent: May 26, 2010, attached
Response: none to date

Mr. David Soo
Paterson Friends of the Great Falls
34 Van Houten Street, Suite 221
Paterson, NJ 07505

Contact: letter sent: May 26, 2010, attached
Response: none to date

Ms. Maria Gillan
Passaic County Cultural and Heritage Commission
Passaic County Community College
One College Boulevard
Paterson, NJ 07505-1179

Contact: letter sent: May 26, 2010, attached
Response: none to date

Mr. Bill Bolger
Paterson Great Falls National Historical Park
National Park Service Northeast Regional Office
200 Chestnut Street, 5th Floor
Philadelphia, PA 19106

Contact: letter sent: May 26, 2010, attached
Response: none to date

Mr. Bill Brookover
National Historic Landmarks Program
National Park Service Northeast Regional Office
200 Chestnut Street, 5th Floor
Philadelphia, PA 19106

Contact: letter sent: May 26, 2010, attached
Response: none to date



Richard Grubb & Associates, Inc.
Cultural Resource Consultants

email: mail@richardgrubb.com • www.richardgrubb.com

May 26, 2010

Mr. Gianfranco Archimede
Paterson Historic Preservation Commission
72 McBride Avenue Extension
Paterson, NJ 07501-2660

Re: Section 106 Consultation
Passaic Valley Water Commission, Water Storage Improvements Feasibility Study
Borough of Woodland Park and City of Paterson, Passaic County, New Jersey

Dear Mr. Archimede,

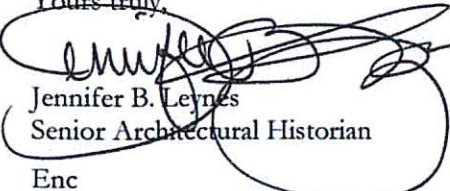
The Passaic Valley Water Commission (PVWC) is performing a feasibility study on water storage improvements to the Great Notch and New Street Reservoirs in the Borough of Woodland Park and the Levine Reservoir in the City of Paterson, Passaic County, New Jersey. Various alternatives are presently being considered as part of the Feasibility Study.

In advance of the alternatives being proposed and on behalf of PVWC, Richard Grubb & Associates, Inc. is preparing a cultural resources investigation to identify significant architectural and archaeological resources in the vicinity of the proposed alternatives to comply with Section 106 of the National Historic Preservation Act. Section 106 requires federally funded and licensed projects to take into account the potential project effects to significant architectural, historic and/or archaeological resources. Section 106 entitles parties with a demonstrated interest in history or historic preservation to provide comments regarding the proposed project.

RGA is particularly interested in any relevant information pertaining to the history and development of the subject reservoirs and the water system as a whole. The Levine Reservoir is located within the Great Falls/SUM Historic District, which is a National Historic Landmark and listed on the National Register of Historic Places. The New Street Reservoir is located adjacent to the Garrett Mountain Park, which has received a Determination of Eligibility from the State Historic Preservation Officer. If you are aware of other significant historic, architectural, or archaeological resources that may be affected by the proposed alternatives, can identify properties that are highly valued by the community, would like to suggest measures to enhance the project, or would like to review a copy of the cultural resources report prepared for this project, please respond on the enclosed Comment Sheet within 30 days of receipt of this letter.

Enclosed for your use is a map showing the location of the project area. Should you have any questions or require additional information feel free to contact me at 609-655-0692 x314.

Yours truly,


Jennifer B. Leynes
Senior Architectural Historian

Enc

cc: Al Sessa, T.Y. Lin International/Medina (w/o enclosure)
Jim Duprey, Passaic Valley Water Commission, Chief Engineer (w/o enclosure)



Richard Grubb & Associates, Inc.
Cultural Resource Consultants

email: mail@richardgrubb.com • www.richardgrubb.com

May 26, 2010

Ms. Alison Faubert
Passaic County Historical Society
Lambert Castle
3 Valley Road
Paterson, NJ 07503-2932

Re: Section 106 Consultation
Passaic Valley Water Commission, Water Storage Improvements Feasibility Study
Borough of Woodland Park and City of Paterson, Passaic County, New Jersey

Dear Ms. Faubert,

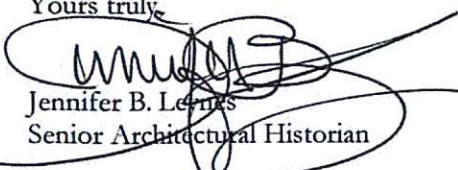
The Passaic Valley Water Commission (PVWC) is performing a feasibility study on water storage improvements to the Great Notch and New Street Reservoirs in the Borough of Woodland Park and the Levine Reservoir in the City of Paterson, Passaic County, New Jersey. Various alternatives are presently being considered as part of the Feasibility Study.

In advance of the alternatives being proposed and on behalf of PVWC, Richard Grubb & Associates, Inc. is preparing a cultural resources investigation to identify significant architectural and archaeological resources in the vicinity of the proposed alternatives to comply with Section 106 of the National Historic Preservation Act. Section 106 requires federally funded and licensed projects to take into account the potential project effects to significant architectural, historic and/or archaeological resources. Section 106 entitles parties with a demonstrated interest in history or historic preservation to provide comments regarding the proposed project.

RGA is particularly interested in any relevant information pertaining to the history and development of the subject reservoirs and the water system as a whole. The Levine Reservoir is located within the Great Falls/SUM Historic District, which is a National Historic Landmark and listed on the National Register of Historic Places. The New Street Reservoir is located adjacent to the Garrett Mountain Park, which has received a Determination of Eligibility from the State Historic Preservation Officer. If you are aware of other significant historic, architectural, or archaeological resources that may be affected by the proposed alternatives, can identify properties that are highly valued by the community, would like to suggest measures to enhance the project, or would like to review a copy of the cultural resources report prepared for this project, please respond on the enclosed Comment Sheet within 30 days of receipt of this letter.

Enclosed for your use is a map showing the location of the project area. Should you have any questions or require additional information feel free to contact me at 609-655-0692 x314.

Yours truly,


Jennifer B. Lewis
Senior Architectural Historian

Enc

cc: Al Sessa, T.Y. Lin International/Medina (w/o enclosure)
Jim Duprey, Passaic Valley Water Commission, Chief Engineer (w/o enclosure)



Richard Grubb & Associates, Inc.
Cultural Resource Consultants

email: mail@richardgrubb.com • www.richardgrubb.com

May 26, 2010

Mr. Ed Smyk
c/o Lambert Castle
3 Valley Road
Paterson, NJ 07503-2932

Re: Section 106 Consultation
Passaic Valley Water Commission, Water Storage Improvements Feasibility Study
Borough of Woodland Park and City of Paterson, Passaic County, New Jersey

Dear Mr. Smyk,

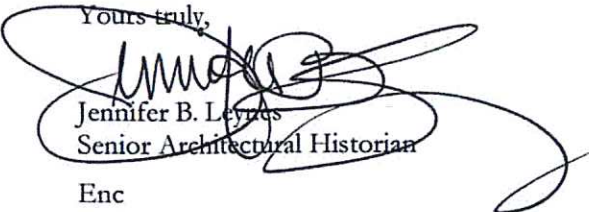
The Passaic Valley Water Commission (PVWC) is performing a feasibility study on water storage improvements to the Great Notch and New Street Reservoirs in the Borough of Woodland Park and the Levine Reservoir in the City of Paterson, Passaic County, New Jersey. Various alternatives are presently being considered as part of the Feasibility Study.

In advance of the alternatives being proposed and on behalf of PVWC, Richard Grubb & Associates, Inc. is preparing a cultural resources investigation to identify significant architectural and archaeological resources in the vicinity of the proposed alternatives to comply with Section 106 of the National Historic Preservation Act. Section 106 requires federally funded and licensed projects to take into account the potential project effects to significant architectural, historic and/or archaeological resources. Section 106 entitles parties with a demonstrated interest in history or historic preservation to provide comments regarding the proposed project.

RGA is particularly interested in any relevant information pertaining to the history and development of the subject reservoirs and the water system as a whole. The Levine Reservoir is located within the Great Falls/SUM Historic District, which is a National Historic Landmark and listed on the National Register of Historic Places. The New Street Reservoir is located adjacent to the Garrett Mountain Park, which has received a Determination of Eligibility from the State Historic Preservation Officer. If you are aware of other significant historic, architectural, or archaeological resources that may be affected by the proposed alternatives, can identify properties that are highly valued by the community, would like to suggest measures to enhance the project, or would like to review a copy of the cultural resources report prepared for this project, please respond on the enclosed Comment Sheet within 30 days of receipt of this letter.

Enclosed for your use is a map showing the location of the project area. Should you have any questions or require additional information feel free to contact me at 609-655-0692 x314.

Yours truly,


Jennifer B. Leynes
Senior Architectural Historian

Enc

cc: Al Sessa, T.Y. Lin International/Medina (w/o enclosure)
Jim Duprey, Passaic Valley Water Commission, Chief Engineer (w/o enclosure)



Richard Grubb & Associates, Inc.
Cultural Resource Consultants

email: mail@richardgrubb.com • www.richardgrubb.com

May 26, 2010

Mr. Raymond Wright
Passaic County Parks Department
675 Goffle Road
Hawthorne, NJ 07506

Re: Section 106 Consultation
Passaic Valley Water Commission, Water Storage Improvements Feasibility Study
Borough of Woodland Park and City of Paterson, Passaic County, New Jersey

Dear Mr. Wright,

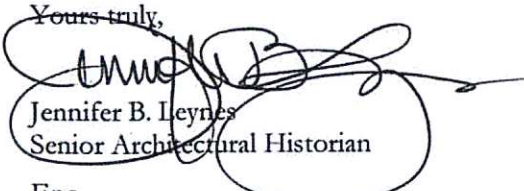
The Passaic Valley Water Commission (PVWC) is performing a feasibility study on water storage improvements to the Great Notch and New Street Reservoirs in the Borough of Woodland Park and the Levine Reservoir in the City of Paterson, Passaic County, New Jersey. Various alternatives are presently being considered as part of the Feasibility Study.

In advance of the alternatives being proposed and on behalf of PVWC, Richard Grubb & Associates, Inc. is preparing a cultural resources investigation to identify significant architectural and archaeological resources in the vicinity of the proposed alternatives to comply with Section 106 of the National Historic Preservation Act. Section 106 requires federally funded and licensed projects to take into account the potential project effects to significant architectural, historic and/or archaeological resources. Section 106 entitles parties with a demonstrated interest in history or historic preservation to provide comments regarding the proposed project.

RGA is particularly interested in any relevant information pertaining to the history and development of the subject reservoirs and the water system as a whole. The Levine Reservoir is located within the Great Falls/SUM Historic District, which is a National Historic Landmark and listed on the National Register of Historic Places. The New Street Reservoir is located adjacent to the Garrett Mountain Park, which has received a Determination of Eligibility from the State Historic Preservation Officer. If you are aware of other significant historic, architectural, or archaeological resources that may be affected by the proposed alternatives, can identify properties that are highly valued by the community, would like to suggest measures to enhance the project, or would like to review a copy of the cultural resources report prepared for this project, please respond on the enclosed Comment Sheet within 30 days of receipt of this letter.

Enclosed for your use is a map showing the location of the project area. Should you have any questions or require additional information feel free to contact me at 609-655-0692 x314.

Yours truly,


Jennifer B. Leynes
Senior Architectural Historian

Enc

cc: Al Sessa, T.Y. Lin International/Medina (w/o enclosure)
Jim Duprey, Passaic Valley Water Commission, Chief Engineer (w/o enclosure)



Richard Grubb & Associates, Inc.
Cultural Resource Consultants

email: mail@richardgrubb.com • www.richardgrubb.com

May 26, 2010

Mr. David Soo
Paterson Friends of the Great Falls
34 Van Houten St. Suite 221
Paterson, NJ 07505

Re: Section 106 Consultation
Passaic Valley Water Commission, Water Storage Improvements Feasibility Study
Borough of Woodland Park and City of Paterson, Passaic County, New Jersey

Dear Mr. Soo,

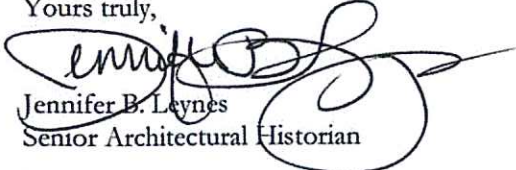
The Passaic Valley Water Commission (PVWC) is performing a feasibility study on water storage improvements to the Great Notch and New Street Reservoirs in the Borough of Woodland Park and the Levine Reservoir in the City of Paterson, Passaic County, New Jersey. Various alternatives are presently being considered as part of the Feasibility Study.

In advance of the alternatives being proposed and on behalf of PVWC, Richard Grubb & Associates, Inc. is preparing a cultural resources investigation to identify significant architectural and archaeological resources in the vicinity of the proposed alternatives to comply with Section 106 of the National Historic Preservation Act. Section 106 requires federally funded and licensed projects to take into account the potential project effects to significant architectural, historic and/or archaeological resources. Section 106 entitles parties with a demonstrated interest in history or historic preservation to provide comments regarding the proposed project.

RGA is particularly interested in any relevant information pertaining to the history and development of the subject reservoirs and the water system as a whole. The Levine Reservoir is located within the Great Falls/SUM Historic District, which is a National Historic Landmark and listed on the National Register of Historic Places. The New Street Reservoir is located adjacent to the Garrett Mountain Park, which has received a Determination of Eligibility from the State Historic Preservation Officer. If you are aware of other significant historic, architectural, or archaeological resources that may be affected by the proposed alternatives, can identify properties that are highly valued by the community, would like to suggest measures to enhance the project, or would like to review a copy of the cultural resources report prepared for this project, please respond on the enclosed Comment Sheet within 30 days of receipt of this letter.

Enclosed for your use is a map showing the location of the project area. Should you have any questions or require additional information feel free to contact me at 609-655-0692 x314.

Yours truly,


Jennifer B. Leynes
Senior Architectural Historian

Enc

cc: Al Sessa, T.Y. Lin International/Medina (w/o enclosure)
Jim Duprey, Passaic Valley Water Commission, Chief Engineer (w/o enclosure)



Richard Grubb & Associates, Inc.
Cultural Resource Consultants

email: mail@richardgrubb.com • www.richardgrubb.com

May 26, 2010

Ms. Maria Gillan
Passaic County Cultural and Heritage Commission
Passaic County Community College
One College Boulevard
Paterson, NJ 07505-1179

Re: Section 106 Consultation
Passaic Valley Water Commission, Water Storage Improvements Feasibility Study
Borough of Woodland Park and City of Paterson, Passaic County, New Jersey

Dear Ms. Gillan,

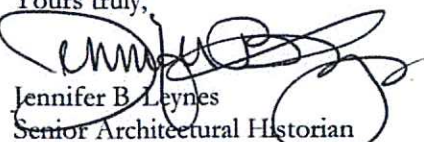
The Passaic Valley Water Commission (PVWC) is performing a feasibility study on water storage improvements to the Great Notch and New Street Reservoirs in the Borough of Woodland Park and the Levine Reservoir in the City of Paterson, Passaic County, New Jersey. Various alternatives are presently being considered as part of the Feasibility Study.

In advance of the alternatives being proposed and on behalf of PVWC, Richard Grubb & Associates, Inc. is preparing a cultural resources investigation to identify significant architectural and archaeological resources in the vicinity of the proposed alternatives to comply with Section 106 of the National Historic Preservation Act. Section 106 requires federally funded and licensed projects to take into account the potential project effects to significant architectural, historic and/or archaeological resources. Section 106 entitles parties with a demonstrated interest in history or historic preservation to provide comments regarding the proposed project.

RGA is particularly interested in any relevant information pertaining to the history and development of the subject reservoirs and the water system as a whole. The Levine Reservoir is located within the Great Falls/SUM Historic District, which is a National Historic Landmark and listed on the National Register of Historic Places. The New Street Reservoir is located adjacent to the Garrett Mountain Park, which has received a Determination of Eligibility from the State Historic Preservation Officer. If you are aware of other significant historic, architectural, or archaeological resources that may be affected by the proposed alternatives, can identify properties that are highly valued by the community, would like to suggest measures to enhance the project, or would like to review a copy of the cultural resources report prepared for this project, please respond on the enclosed Comment Sheet within 30 days of receipt of this letter.

Enclosed for your use is a map showing the location of the project area. Should you have any questions or require additional information feel free to contact me at 609-655-0692 x314.

Yours truly,


Jennifer B. Leynes
Senior Architectural Historian

Enc

cc: Al Sessa, T.Y. Lin International/Medina (w/o enclosure)
Jim Duprey, Passaic Valley Water Commission, Chief Engineer (w/o enclosure)



Richard Grubb & Associates, Inc.
Cultural Resource Consultants

email: mail@richardgrubb.com • www.richardgrubb.com

May 26, 2010

Mr. Bill Bolger
Paterson Great Falls National Historical Park
National Park Service Northeast Regional Office
200 Chestnut Street, 5th Floor
Philadelphia, PA 19106

Re: Section 106 Consultation
Passaic Valley Water Commission, Water Storage Improvements Feasibility Study
Borough of Woodland Park and City of Paterson, Passaic County, New Jersey

Dear Mr. Bolger,

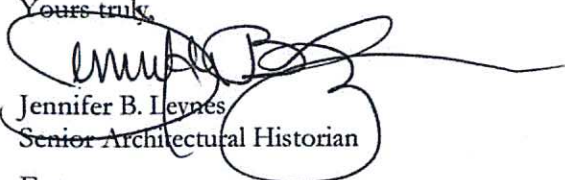
The Passaic Valley Water Commission (PVWC) is performing a feasibility study on water storage improvements to the Great Notch and New Street Reservoirs in the Borough of Woodland Park and the Levine Reservoir in the City of Paterson, Passaic County, New Jersey. Various alternatives are presently being considered as part of the Feasibility Study.

In advance of the alternatives being proposed and on behalf of PVWC, Richard Grubb & Associates, Inc. is preparing a cultural resources investigation to identify significant architectural and archaeological resources in the vicinity of the proposed alternatives to comply with Section 106 of the National Historic Preservation Act. Section 106 requires federally funded and licensed projects to take into account the potential project effects to significant architectural, historic and/or archaeological resources. Section 106 entitles parties with a demonstrated interest in history or historic preservation to provide comments regarding the proposed project.

RGA is particularly interested in any relevant information pertaining to the history and development of the subject reservoirs and the water system as a whole. The Levine Reservoir is located within the Great Falls/SUM Historic District, which is a National Historic Landmark and listed on the National Register of Historic Places. The New Street Reservoir is located adjacent to the Garrett Mountain Park, which has received a Determination of Eligibility from the State Historic Preservation Officer. If you are aware of other significant historic, architectural, or archaeological resources that may be affected by the proposed alternatives, can identify properties that are highly valued by the community, would like to suggest measures to enhance the project, or would like to review a copy of the cultural resources report prepared for this project, please respond on the enclosed Comment Sheet within 30 days of receipt of this letter.

Enclosed for your use is a map showing the location of the project area. Should you have any questions or require additional information feel free to contact me at 609-655-0692 x314.

Yours truly,


Jennifer B. Levnes
Senior Architectural Historian

Enc

cc: Al Sessa, T.Y. Lin International/Medina (w/o enclosure)
Jim Duprey, Passaic Valley Water Commission, Chief Engineer (w/o enclosure)



Richard Grubb & Associates, Inc.
Cultural Resource Consultants

email: mail@richardgrubb.com • www.richardgrubb.com

May 26, 2010

Mr. Bill Brookover
National Historic Landmarks Program
National Park Service Northeast Regional Office
200 Chestnut Street, 5th Floor
Philadelphia, PA 19106

Re: Section 106 Consultation
Passaic Valley Water Commission, Water Storage Improvements Feasibility Study
Borough of Woodland Park and City of Paterson, Passaic County, New Jersey

Dear Mr. Brookover,

The Passaic Valley Water Commission (PVWC) is performing a feasibility study on water storage improvements to the Great Notch and New Street Reservoirs in the Borough of Woodland Park and the Levine Reservoir in the City of Paterson, Passaic County, New Jersey. Various alternatives are presently being considered as part of the Feasibility Study.

In advance of the alternatives being proposed and on behalf of PVWC, Richard Grubb & Associates, Inc. is preparing a cultural resources investigation to identify significant architectural and archaeological resources in the vicinity of the proposed alternatives to comply with Section 106 of the National Historic Preservation Act. Section 106 requires federally funded and licensed projects to take into account the potential project effects to significant architectural, historic and/or archaeological resources. Section 106 entitles parties with a demonstrated interest in history or historic preservation to provide comments regarding the proposed project.

RGA is particularly interested in any relevant information pertaining to the history and development of the subject reservoirs and the water system as a whole. The Levine Reservoir is located within the Great Falls/SUM Historic District, which is a National Historic Landmark and listed on the National Register of Historic Places. The New Street Reservoir is located adjacent to the Garrett Mountain Park, which has received a Determination of Eligibility from the State Historic Preservation Officer. If you are aware of other significant historic, architectural, or archaeological resources that may be affected by the proposed alternatives, can identify properties that are highly valued by the community, would like to suggest measures to enhance the project, or would like to review a copy of the cultural resources report prepared for this project, please respond on the enclosed Comment Sheet within 30 days of receipt of this letter.

Enclosed for your use is a map showing the location of the project area. Should you have any questions or require additional information feel free to contact me at 609-655-0692 x314.

Yours truly,


Jennifer B. Leynes
Senior Architectural Historian

Enc

cc: Al Sessa, T.Y. Lin International/Medina (w/o enclosure)
Jim Duprey, Passaic Valley Water Commission, Chief Engineer (w/o enclosure)

Telephone Log

Date: June 17, 2010

Project No./Name: 2009-253 Levine Reservoir

Staff Name: Jennifer Leynes

Contact: Gianfranco Archimede

Contact Organization: Paterson Historic Preservation Commission

Contact Phone No.: (973) 357-1911

Contact Fax No.: n/a

Mr. Archimede was contacted as follow-up to the letter sent on May 26, 2010. He concurred with the assessment that the Levine Reservoir is a contributing resource to the Great Falls of Paterson/SUM Historic District. He also noted that the Levine Reservoir is the last of the four reservoirs that formerly comprised the Paterson waterworks system, which has historical significance in its own right, although it has not been evaluated for the National Register. Mr. Archimede also indicated that the reservoir lies within the Great Falls State Park boundary but not the National Park Service boundary.

Mr. Archimede is aware of efforts to improve security in the water system and is sympathetic to the need to cover the Levine Reservoir. He suggested that it might be useful to see examples of treatment options and what other communities have done, in particular projects involving historic reservoirs that were approved by HPOs. He also mentioned an interest in solar panels and a willingness to entertain that option on the site. The possibility of the reservoir being covered and made available as open space to city residents was also attractive from the city's perspective, although the effects on historic resources would have to be determined.

Follow up: Continued consultation regarding alternatives.



OFFICE OF THE
PASSAIC COUNTY HISTORIAN
LAMBERT CASTLE
GARRET MOUNTAIN RESERVATION
PATERSON, NEW JERSEY 07503

E.A. SMYK
COUNTY HISTORIAN

3 June 2010

Jennifer B. Lyons
Senior Architectural Historian
Richard Grubb & Associates, Inc.
Cultural Resources Consultants
30 North Main Street, P.O. Box 434
Cranbury, NJ 08512

Subject: *Section 106 Consultation*
Passaic Valley Water Commission, Water Storage Improvement Feasibility Study

Dear Ms. Lyons :

I have your letter of 26 May concerning the history and development of the Passaic Valley Water Commission reservoirs and water system.

In 1913, the Boston engineering firm of Metcalf & Eddy produced a 670 page report, bound in leather, on the evaluation of the independent water companies which eventually were consolidated under the present water commission. This hefty volume is 4 inches thick. It is titled "Report to the Board of Engineers appointed by the New Jersey Water Supply Commission upon the value of the property [listed are the various water companies] controlled by the New Jersey General Security Company, Paterson, New Jersey." It is dated 15 July 1913. A copy of the report was on a shelf in the water commissions' museum at the Little Falls filtration facility. This valuable document is exhaustive in its treatment of the properties and contains extensive period photographs. It would answer many of your questions on the reservoirs and water system.

I would also suggest that you consult the 50th anniversary history of the water commission, which was supposed to be issued in 1980. I reviewed a draft of the history for Connie Wilmont. She was hired by the commission to develop this special commemorative publication.

Many years ago, I requested access to the commission's archives for my own research endeavors. I intended to write a series of essays on the history of water supply in Passaic County. The request was denied. I was told "the files are stored away, they are not



Page 2
Jennifer B. Lyons
3 June 2010

accessible, we do not have sufficient staff to devote time to locating records, etc." Perhaps you will be more successful in negotiating your way through the commission's archival labyrinth.

You might also try contacting Professor Mark Newell. He was affiliated with Ramapo State College and had collected an immense amount of documentation on the development of the area's water supply system for his doctoral dissertation.

Sincerely yours,

A handwritten signature in black ink, appearing to read "E.A. Smyk", with a stylized flourish at the end.

E.A. Smyk
Passaic County Historian

EAS/da

APPENDIX B: 1987 CITY OF PATERSON CULTURAL RESOURCE SURVEY

INDIVIDUAL STRUCTURE SURVEY FORM

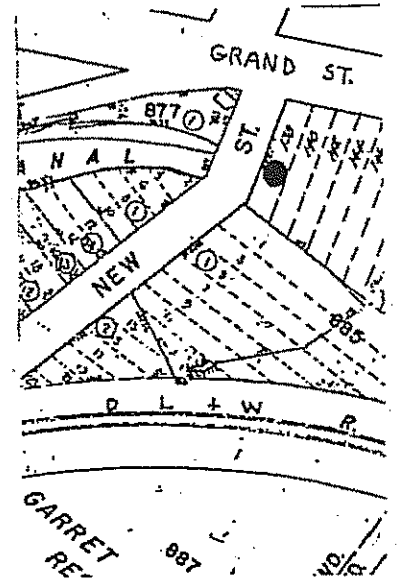
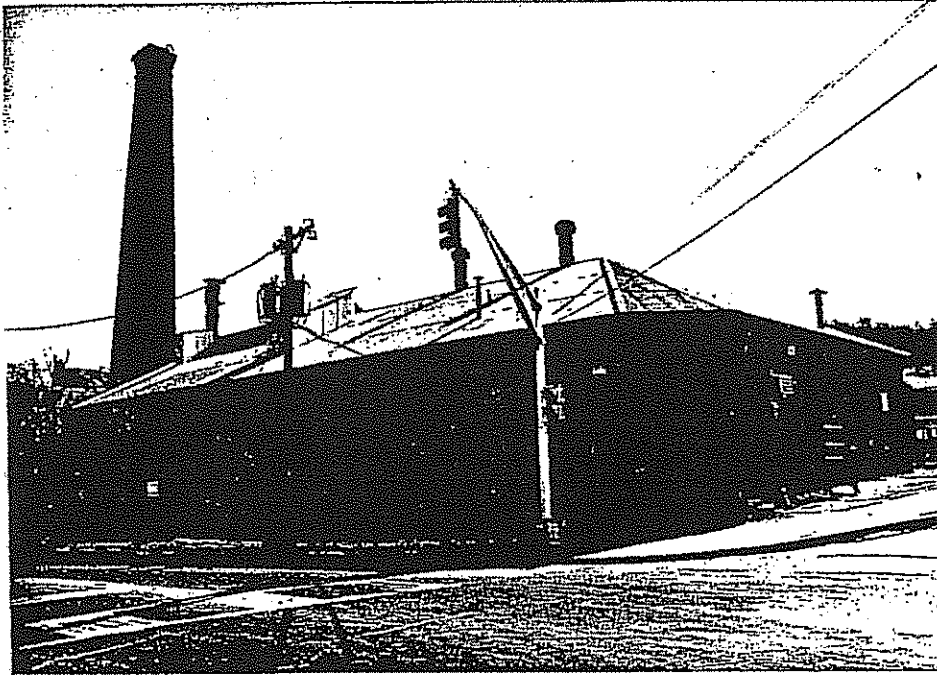
Crowley City Hall
1987 Vol 2

INV. NO: 1608 -166

NEG. NO: 10 -13

DIST. NO: -

LOCATION MAP:



ADDRESS: 138 Grand Street

138 Grand Street is a single story, 12 bay, irregular plan, brick industrial building, constructed circa 1890. Its classicizing utilitarian features include brick pilasters ending in a corbelled brick cornice, and segmentally arched windows.

Built as the Passaic Water Company Pump House, this building is significant primarily as a member of Paterson's city-wide industrial community. It is situated near the border of the designated National Register Great Falls/ S.U.M. Historic District and on the bank of the Passaic River.

References: 1877 Hyde Atlas; 1884 Robinson Atlas; 1899 Robinson Atlas; 1915 Mueller Atlas; 1975 REDI, Inc. Tax Maps.

(See reverse side for checklist)

ADDRESS: 138 Grand Street INVENTORY NO: 1608 -166
COMMON NAME: E. & H. Laminating NEG. FILE NO: 10 -13
HISTORIC NAME: Passaic Water Co. pump.sta. BLOCK: 875 LOT: 1
OWNER/MANAGER: Dowling COUNTY: Passaic
CITY: Paterson USGS QUAD: Paterson

ORIGINAL CONSTRUCTION: DATE: c. 1890 SOURCE: visual and maps
ARCHITECT: BUILDER:

MAJOR STYLISTIC INFLUENCE: utilitarian classicizing
CHARACTERISTICS: brick pilasters
corbelled brick cornice
segmentally arched lintels

EXTENT AND EFFECT OF ALTERATIONS:

The alterations are few.
The alterations have little effect on the building's integrity.
The alterations are reversible.

BUILDING DESCRIPTION:

PLAN: rectangular STORIES: 1.0 GROSS AREA (SF): n/a
FRAMING: brick FOUNDATION: not visible
PRIMARY FACADE MATERIAL: brick COLOR: red
SECONDARY FACADE MATERIAL: brownstone COLOR: brown
NUMBER OF BAYS: 12 ARTICULATION OF BAYS: pilasters
RHYTHM OR SPACING OF WINDOWS: semi-regular
PRIMARY WINDOWS: 9/9 double hung SECONDARY WINDOWS: oculus; infill
NUMBER OF DOORS: 2+
LOCATION OF MAIN ENTRANCE: 3rd bay from west
ORNAMENT OF MAIN ENTRANCE: replacement overhead door
LOCATION OF SECONDARY DOOR: throughout
ORNAMENT OF SECONDARY DOOR: replacement overhead door
ROOF SHAPE: hip MATERIAL: metal COLOR: grey
NUMBER OF CHIMNEYS: 1+ CHIMNEY MATERIAL: brick; metal
STYLE OF ROOF CORNICE: classicizing
MATERIAL OF ROOF CORNICE: brick
STYLE OF 1ST FL. CORNICE: none
OTHER MAJOR ORNAMENT: large square chimney tower

ORIGINAL USE: industrial CURRENT USE: industrial

RELATIONSHIP TO SURROUNDINGS:

The building is detached on both sides.
The building is in line with the sidewalk.
The building contrasts with the streetscape.
The building contributes to the streetscape.

BUILDING CONDITION: good

NATIONAL REGISTER ELIGIBILITY: Eligible as an individual building.
CRITERIA FOR EVALUATION: C

APPENDIX C: ANNOTATED BIBLIOGRAPHY

Author: Ilene Grossman-Bailey and Jennifer B. Leynes
Title: Phase IA Cultural Resources Survey, Levine Reservoir Water Storage Improvement Project, City of Paterson, Passaic County, New Jersey
Date: July 2010
RGA Database Title: Levine Reservoir
RGA Project No: 2009-253
State: New Jersey
County: Passaic
Municipality: City of Paterson
U.S.G.S. Quad: Paterson, NJ
Drainage Basin: Passaic River, Newark Bay, New York Harbor, Atlantic Ocean
Regulation: Section 106; N.J.A.C. 7:22-10:8
Project Type: Infrastructure: Reservoir
Project Sponsor: Passaic Valley Water Commission
Client: T.Y. Lin International | Medina
Level of Survey: Phase IA cultural resources survey
Cultural Resources: Great Falls of Paterson/Society for Useful Manufactures Historic District